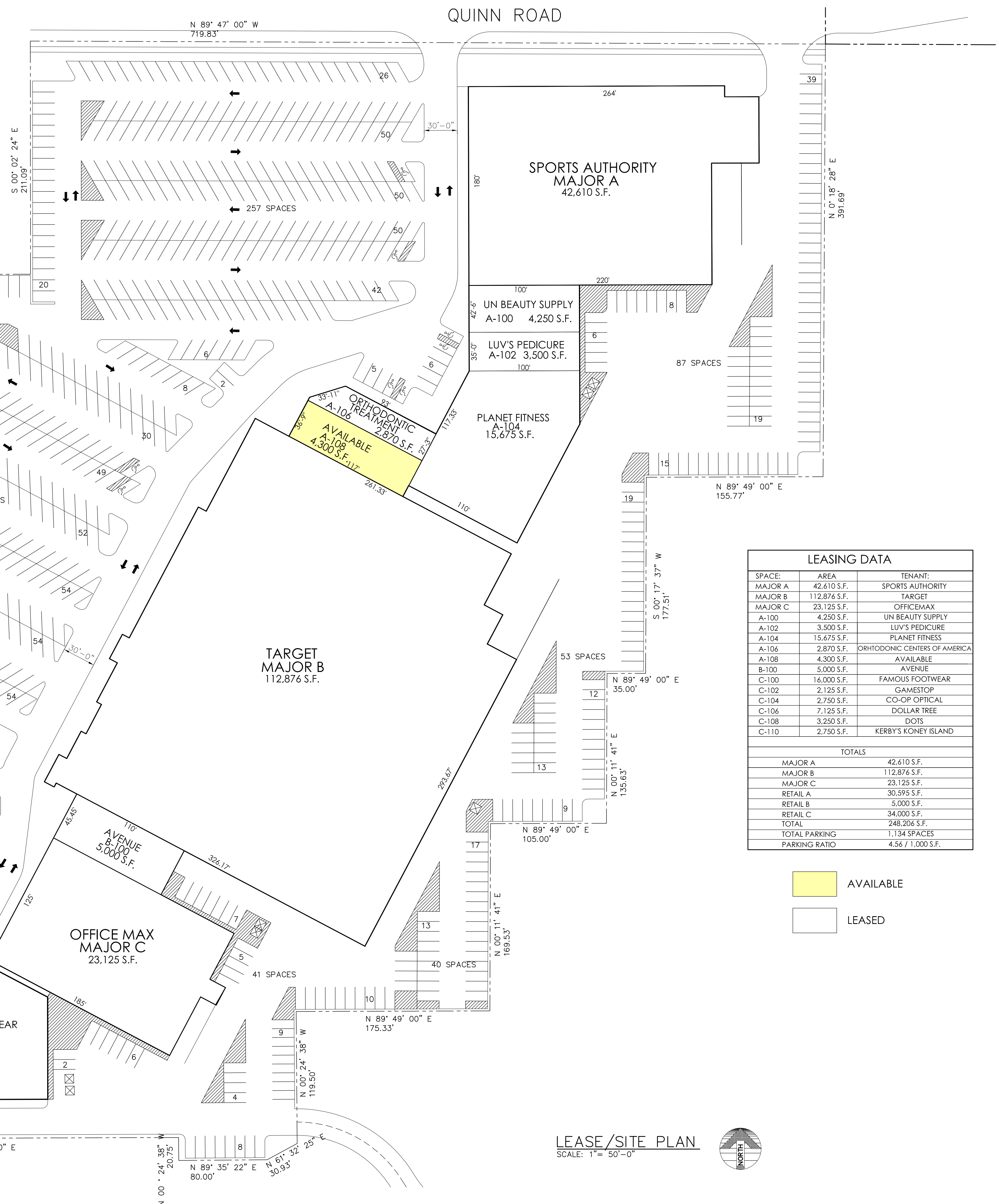
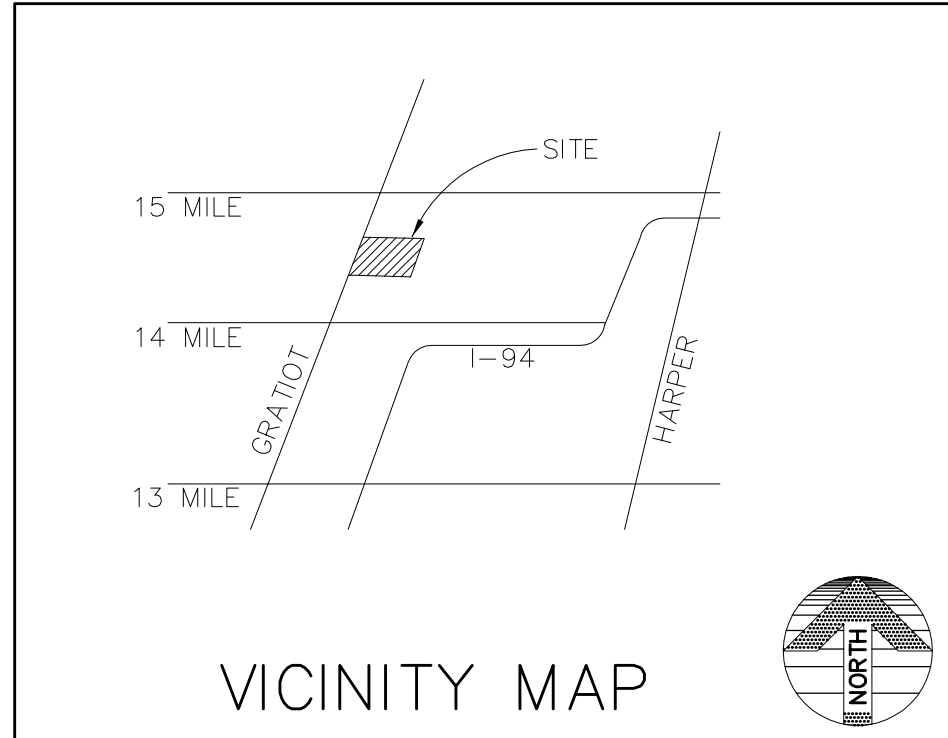


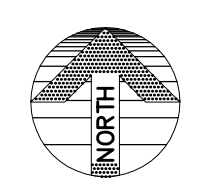
Dates:
 MARCH 17, 2009
 MAY 19, 2009
 AUGUST 20, 2009
 SEPT. 16, 2009
 MARCH 9, 2011
 APRIL 21, 2011



LEASING DATA		
SPACE:	AREA	TENANT:
MAJOR A	42,610 S.F.	SPORTS AUTHORITY
MAJOR B	112,876 S.F.	TARGET
MAJOR C	23,125 S.F.	OFFICEMAX
A-100	4,250 S.F.	UN BEAUTY SUPPLY
A-102	3,500 S.F.	LUV'S PEDICURE
A-104	15,675 S.F.	PLANET FITNESS
A-106	2,870 S.F.	ORTHODONTIC CENTERS OF AMERICA
A-108	4,300 S.F.	AVAILABLE
B-100	5,000 S.F.	AVENUE
C-100	16,000 S.F.	FAMOUS FOOTWEAR
C-102	2,125 S.F.	GAMESTOP
C-104	2,750 S.F.	CO-OP OPTICAL
C-106	7,125 S.F.	DOLLAR TREE
C-108	3,250 S.F.	DOTS
C-110	2,750 S.F.	KERBY'S KONEY ISLAND
TOTALS		
MAJOR A	42,610 S.F.	
MAJOR B	112,876 S.F.	
MAJOR C	23,125 S.F.	
RETAIL A	30,595 S.F.	
RETAIL B	5,000 S.F.	
RETAIL C	34,000 S.F.	
TOTAL	248,206 S.F.	
TOTAL PARKING	1,134 SPACES	
PARKING RATIO	4.56 / 1,000 S.F.	

AVAILABLE
 LEASED

LEASE/SITE PLAN
 SCALE: 1" = 50'-0"



Project
CLINTON POINTE
 MICHIGAN
 CLINTON TWP.

DISCLAIMER

THIS DRAWING IS ILLUSTRATIVE AND FOR INFORMATION ONLY. IT IS NOT TO BE USED FOR CONSTRUCTION OR FOR ANY OTHER PURPOSE WITHOUT THE WRITTEN CONSENT OF RAMCO GERSHENSON, INC. THE USER SHALL BE RESPONSIBLE FOR OBTAINING ALL NECESSARY PERMITS AND FOR VERIFYING ALL DATA AND CONDITIONS ON THE GROUND. RAMCO GERSHENSON, INC. IS NOT RESPONSIBLE FOR ANY ERRORS OR OMISSIONS IN THIS DRAWING. WARRANTIES ARE EXPRESSED OR IMPLIED BY THIS DRAWING.



Job Number
3629
 Sheet Number
AVAILABILITY-6